

FLAIL MOWERS





**WE
DEVELOPED
A COMPLETE
SYSTEM,
BECAUSE
HAVING
THE BEST
STEEL ISN'T
ENOUGH
FOR US.**

The "ALPEGO INSIDE" label, seen on all our machines, certifies the **exceptional quality** of Alpego products. A perfect combination of **top quality raw materials**, a **sustainable painting process** and **certified welding**; all to **guarantee exceptional lifetime and lasting quality**.



HIGH STRENGTH STEEL

All Alpego machines use **the best Swedish steel to reduce weight and enhance working performance**, minimising both fuel use and operating costs. This also has a huge impact on environmental sustainability.



ECO PAINTING

In Europe, this unique system allows every component to be **painted according to the most suitable process, while protecting the environment**. The system uses water-based and powder paints **with no production of VOC** (volatile organic compounds) emissions.



CERTIFIED WELDING

The exceptional durability of Alpego structural components has been guaranteed for over twenty years by the effectiveness of the **welds, that meet the standardised processes certified by the National Welding Institute**.

A complete range for every need

Three types of flail mower for a complete range up to 3.2 m.

The Alpego range of flail mowers meets the greatest professional needs of farmers and outsourcers looking for lasting, high-performance machines with unique technical solutions on the market.

The range includes:

- TRISAR multi-purpose flail mowers
- TRILAT side flail mowers
- TRISTOC shredders



FLAIL MOWERS

TRISAR

TB2

Lowered multi-purpose flail mower
HP 40-80
Pg. 8-9



TR26

Multi-purpose flail mower
HP 40-80
Pg. 10



TR36

Multi-purpose flail mower
HP 45-100
Pg. 11



TR46

Multi-purpose flail mower
HP 55-150
Pg. 13



TRILAT

TL31

Side flail mower
HP 55-130
Pg. 16



TL33

Side flail mower
HP 55-130
Pg. 17



TT97

Shredder
HP 80-160
Pg. 21



TRISTOC

"SSA" mulching chamber

The whole range of ALPEGO shredders is equipped with the exclusive "SSA" MULCHING CHAMBER

"We have been designing solutions to guarantee high mulching for years. The result is our SSA "Super Shredder Alpego" system, the mulching chamber suited to all conditions for both plant waste and wood residues."

Matteo Zambon
Technical Dept. Manager



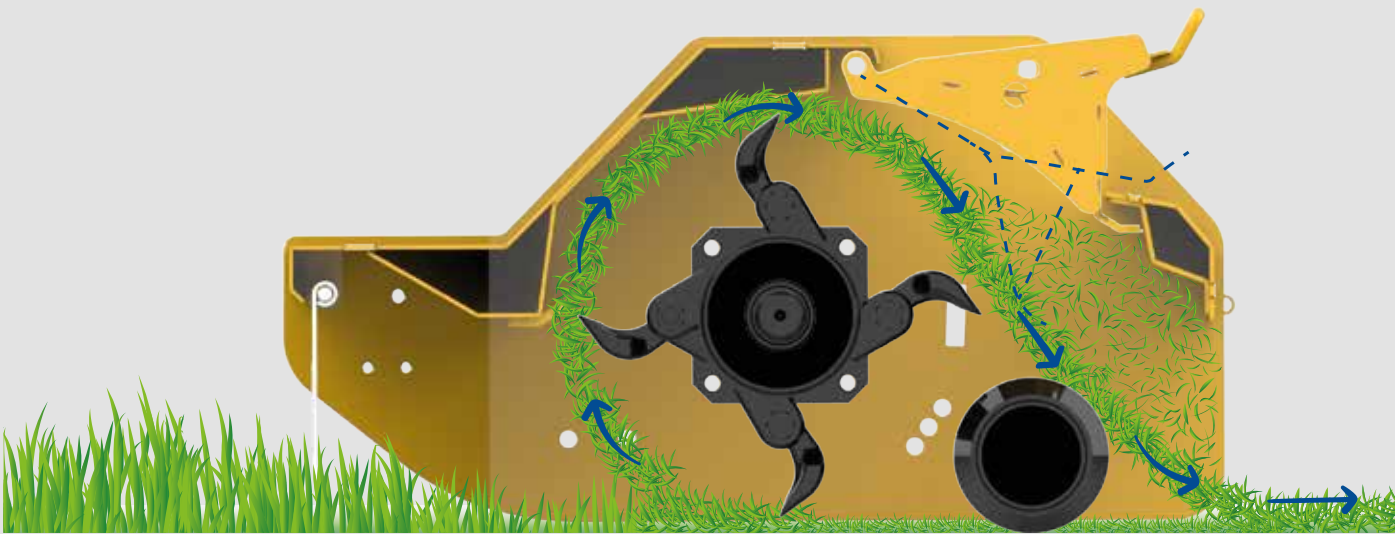
TRISAR

Range of multi-purpose flail mowers

Alpego multi-purpose flail mowers are ideal for working in all situations with excellent results and in complete safety; for cutting grass, mulching prunings and wood residues in vineyards and orchards.

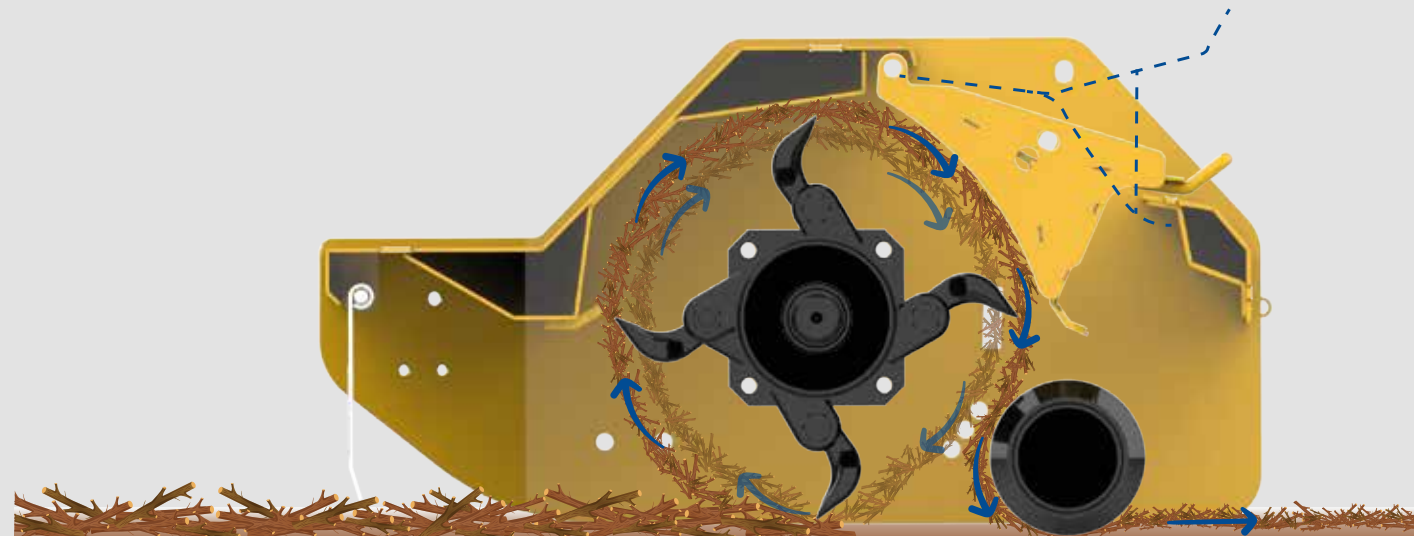
"SSA" MULCHING CHAMBER

Multi-purpose SSA "Super Shredder Alpego" mulching chamber (patented in Italy) with variable volume; changing the position of the inside gate, 2 different types of work can be obtained.



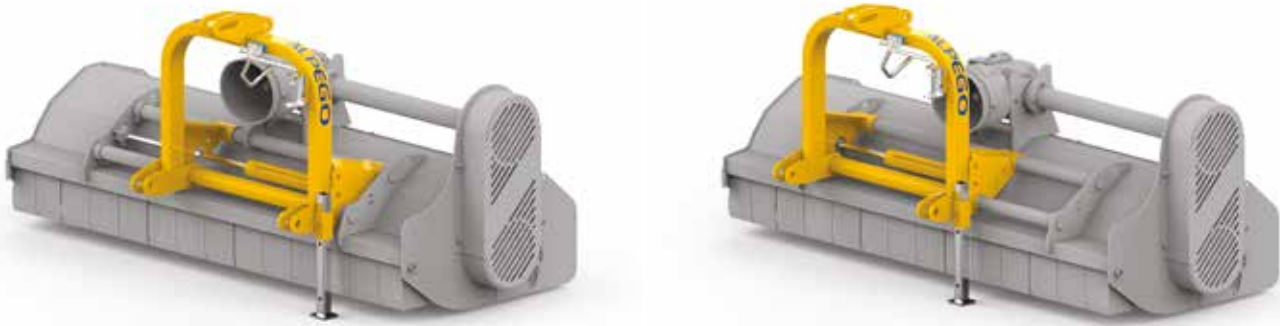
1 GRASS FUNCTION

The deflector on the gate remains open, for simple cutting and discharge after the roller (grass cuttings, bushes, thick vegetation).



2 FUNCTION FOR WOOD TURBO-MULCHER

The deflector on the gate remains low and the wood residues are finely mulched, remaining in the chamber until completely mulched (vines, brushwood, prunings, wood...).



SIDE SHIFT

The Alpego flail mower side shift can be controlled manually or hydraulically.



SELF-CLEANING REAR ROLLER

The self-cleaning rear roller has an automatic roller cleaning system, thanks to its position very close to the rotor.



DOUBLE COUNTER-BLADE

The largest models in the Trisar range are equipped with a second counter-blade as standard. (TR36-TR46)



INTERNAL COUNTER-FRAME

The mulching chamber, consisting of a double metal frame, increases the strength and integrity of the machine, while protecting the rear gate against damage.



MOVEABLE DOUBLE 3-POINT HITCH

The double 3-point hitch on the TR46 ensures both front and rear applications on the machine.

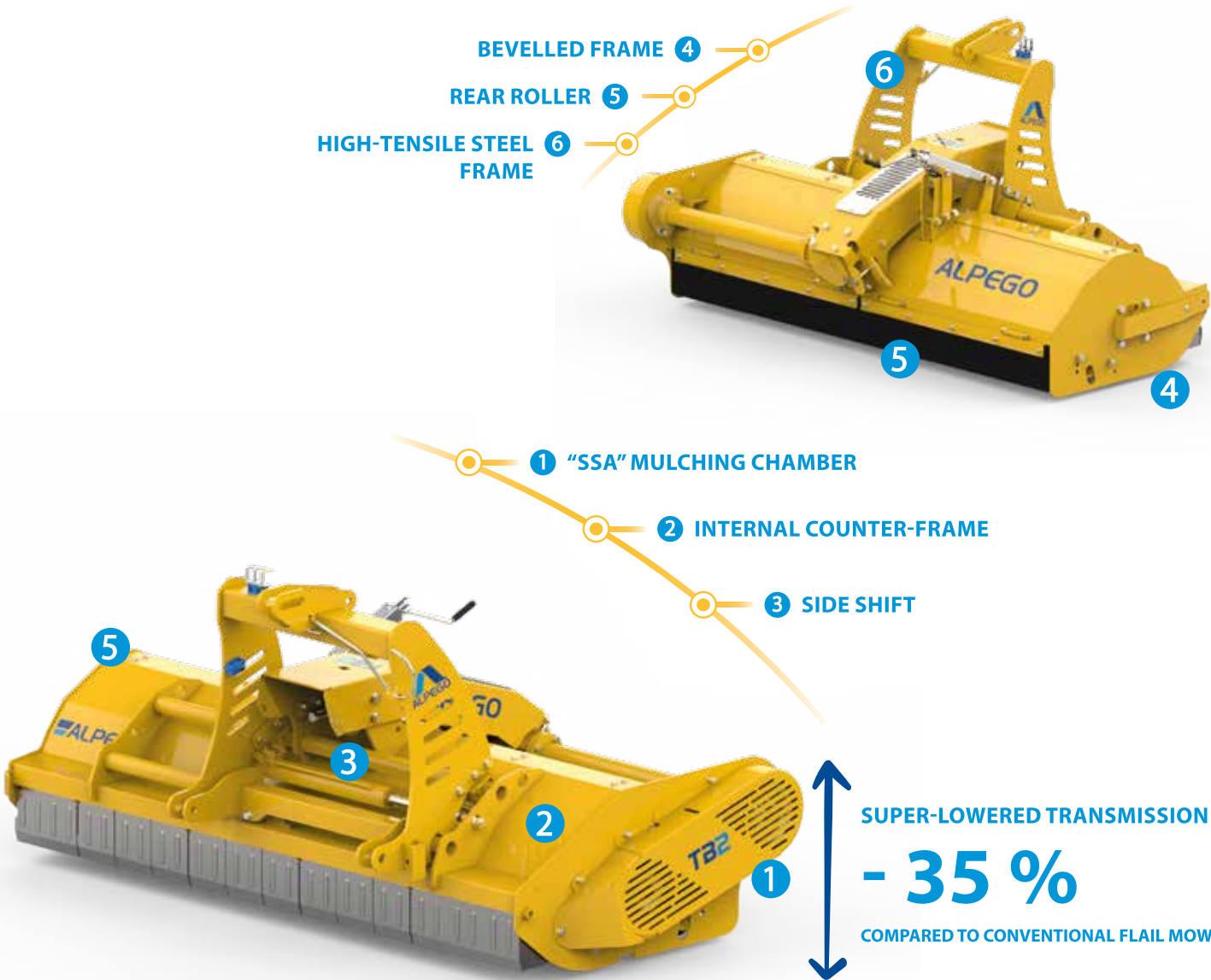
Lowered multi-purpose flail mower for tractors up to 80 HP, working width from 1.4 to 2 m and mulching of residues up to Ø 5 cm

Flail mower with lowered profile, ideal for tractors from 40 to 80 HP. The patented SSA system is used to work, with excellent results and in complete safety, on both grass and woody materials, and is recommended for mulching grass, straw, plant residues, shrubs, brush and wood residues up to Ø 5 cm., particularly suited for vineyard maintenance. Available in working widths 1.4 - 1.6 - 1.8 - 2 m.



VBHP SPECIAL BELT

The use of the new high-performance VBHP SPECIAL (V-Belt-High-Performance) belts offers retracting side transmission with narrow guard, ensuring high reliability.



| | TB2-140 | TB2-160 | TB2-180 | TB2-200 |
|---------------------------------------|---------|---------|---------|---------|
| Working width (mm) | 1400 | 1600 | 1800 | 2000 |
| Transport width (mm) | 1550 | 1750 | 1950 | 2150 |
| Tractor power (HP) | 40-80 | 45-80 | 55-80 | 55-80 |
| Rods (no.) | 12 | 14 | 16 | 16 |
| Belts (no.) | 3 | 3 | 3 | 3 |
| Roller diameter (mm) | 140 | 140 | 140 | 140 |
| Weight with hydraulic side shift (Kg) | 520 | 550 | 590 | 630 |

1 "SSA" MULCHING CHAMBER
Multi-purpose mulching chamber with variable volume and innovative flywheel control. Changing the position of the gate, 2 different types of work can be obtained.

2 INTERNAL COUNTER-FRAME
Mulching chamber with double metal frame to increase the strength and integrity of the machine.

3 SIDE SHIFT
Hydraulically controlled side shift with optimised central positioning.

4 BEVELLED FRAME
Frame with RH bevelled side with no jutting parts and inner rotor supports.

5 REAR ROLLER
The self-cleaning rear roller has an automatic roller cleaning system, thanks to its position very close to the rotor.

6 HIGH-TENSILE STEEL FRAME
Sturdy frame in dual-layer high-tensile steel.

7 NEW CENTRAL GEARBOX
New-concept angled gearbox with a super-lowered design.

8 SIDE TRANSMISSION
Retracting side transmission with narrow guard, thanks to the use of the new high-performance distribution belts VBHP SPECIAL (V-Belt-High-Performance)

9 PROFESSIONAL ROTOR
Professional rotor with angled tool-holder grips equipped with large self-sharpening universal rods with M18 bolts.

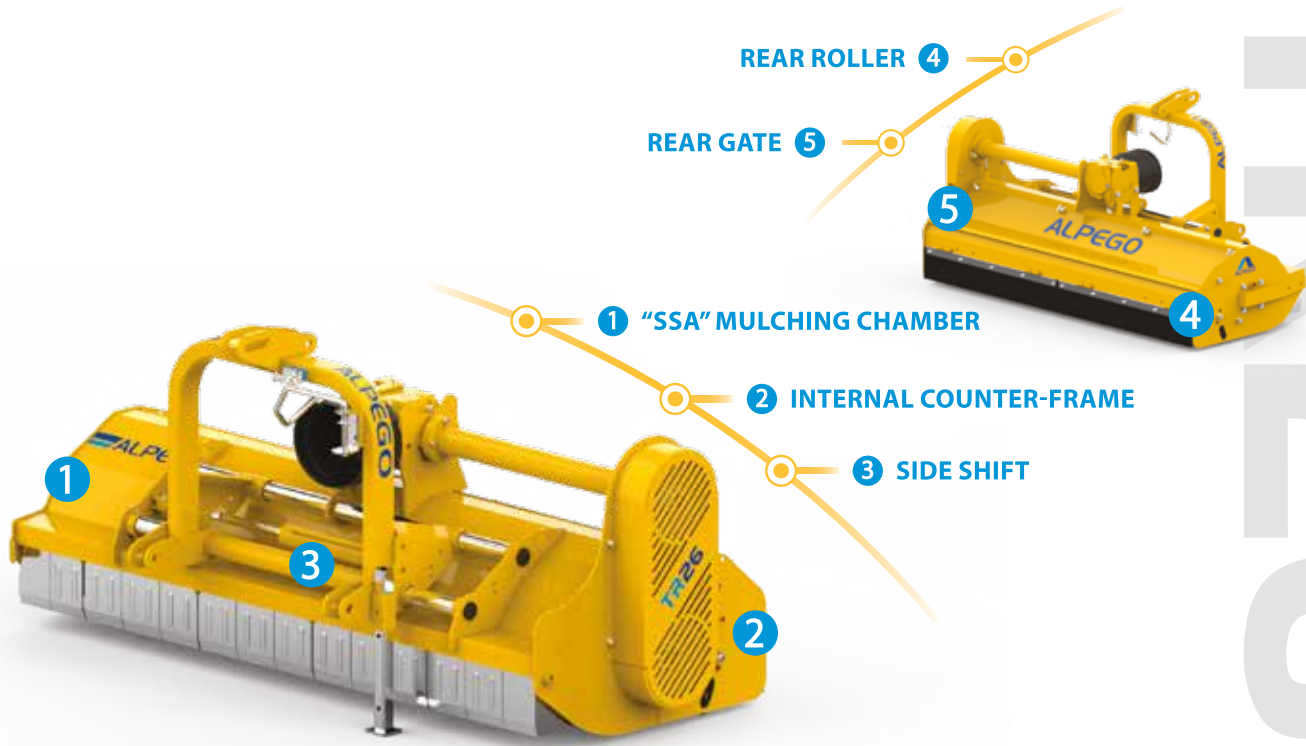
EQUIPMENT
PTO 540 rpm / Cat. 1/2 linkage / Drive shaft with guard / Rear roller Ø140 mm with protected bearings / Fixed counter-blade / Hydraulically controlled side shift



TR26

Multi-purpose flail mower for tractors up to 80 HP, working width from 1.4 to 2 m and mulching of residues up to Ø 5 cm

Multi-purpose flail mower ideal for tractors from 40 to 80 HP. The patented SSA system is used to work, with excellent results and in complete safety, on both grass and woody materials, and is recommended for mulching grass, straw, plant residues, shrubs, brush and wood residues up to Ø 5 cm., for maintenance of fallow land and green areas. Available in working widths 1.4 - 1.6 - 1.8 - 2 m.



| | TR26-140 | TR26-160 | TR26-180C | TR26-200C |
|--|----------|----------|-----------|-----------|
| Working width (mm) | 1400 | 1600 | 1800 | 2000 |
| Transport width (mm) | 1550 | 1750 | 1950 | 2150 |
| Tractor power (HP) | 40-80 | 45-80 | 50-80 | 55-80 |
| Rods (no.) | 12 | 12 | 16 | 16 |
| Belts (no.) | 4 | 4 | 4 | 4 |
| Roller diameter (mm) | 140 | 140 | 140 | 140 |
| Weight with mechanical side shift (Kg) | 430 | 455 | 495 | 525 |
| Weight with hydraulic side shift (Kg) | 435 | 455 | 495 | 525 |

1 "SSA" MULCHING CHAMBER

Multi-purpose mulching chamber with variable volume; changing the position of the gate, 2 different types of work can be obtained.

2 INTERNAL COUNTER-FRAME

Mulching chamber with double metal frame to increase the strength and integrity of the machine.

3 SIDE SHIFT

Mechanically or hydraulically controlled side shift (CHOOSE WHICH)

4 REAR ROLLER

The self-cleaning rear roller has an automatic roller cleaning system, thanks to its position very close to the rotor.

5 REAR GATE

Opening rear gate for easy maintenance.

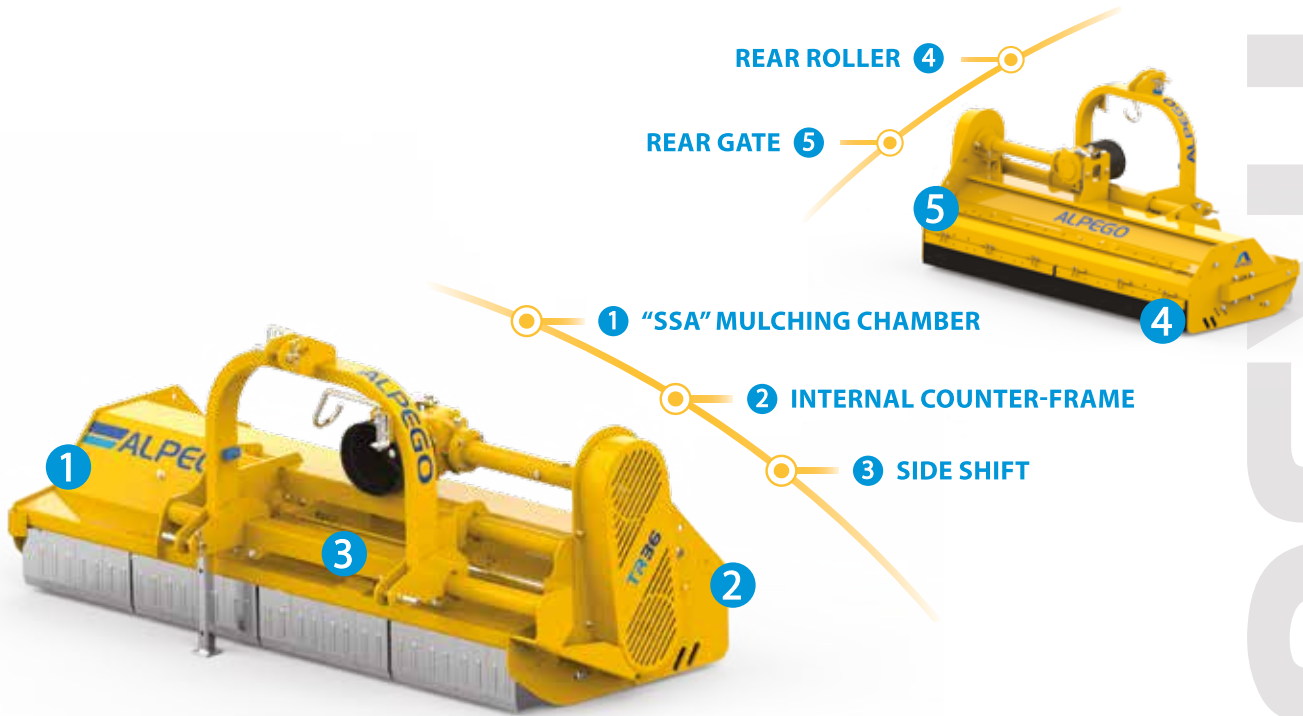
EQUIPMENT

PTO 540 rpm / Cat. 1/2 linkage / Drive shaft with guard / Rear roller Ø140 mm with protected bearings / Fixed counter-blade

TR36

Professional multi-purpose flail mower for tractors up to 100 HP, working width from 1.6 to 2.8 m and mulching of residues up to Ø 8/10 cm

Professional multi-purpose flail mower ideal for tractors from 45 to 100 HP. The patented SSA system is used to work, with excellent results and in complete safety, on both grass and woody materials, and is recommended for mulching grass, straw, plant residues, shrubs, corn stalks, brush and wood residues up to Ø 8-10 cm., for maintenance of fallow land and green areas. Available in working widths 1.6 - 1.8 - 2 - 2.2 - 2.4 - 2.8 m.



| | TR36-160 | TR36-180 | TR36-200 | TR36-220C | TR36-240C | TR36-280M |
|--|----------|----------|----------|-----------|-----------|-----------|
| Working width (mm) | 1600 | 1800 | 2000 | 2200 | 2400 | 2800 |
| Transport width (mm) | 1750 | 1950 | 2150 | 2350 | 2550 | 2950 |
| Tractor power (HP) | 45-100 | 50-100 | 55-100 | 60-100 | 65-100 | 70-100 |
| Rods (no.) | 14 | 16 | 16 | 20 | 20 | 24 |
| Belts (no.) | 4 | 4 | 4 | 4 | 4 | 5 |
| Roller diameter (mm) | 160 | 160 | 160 | 160 | 160 | 160 |
| Weight with mechanical side shift (Kg) | 685 | 730 | 770 | 815 | 855 | 955 |
| Weight with hydraulic side shift (Kg) | 695 | 740 | 780 | 825 | 865 | 965 |

1 "SSA" MULCHING CHAMBER

Multi-purpose mulching chamber with variable volume; changing the position of the gate, 2 different types of work can be obtained.

2 INTERNAL COUNTER-FRAME

Mulching chamber with double metal frame to increase the strength and integrity of the machine.

3 SIDE SHIFT

Mechanically or hydraulically controlled side shift (CHOOSE WHICH)

4 REAR ROLLER

The self-cleaning rear roller has an automatic roller cleaning system, thanks to its position very close to the rotor.

5 REAR GATE

Opening rear gate for easy maintenance.

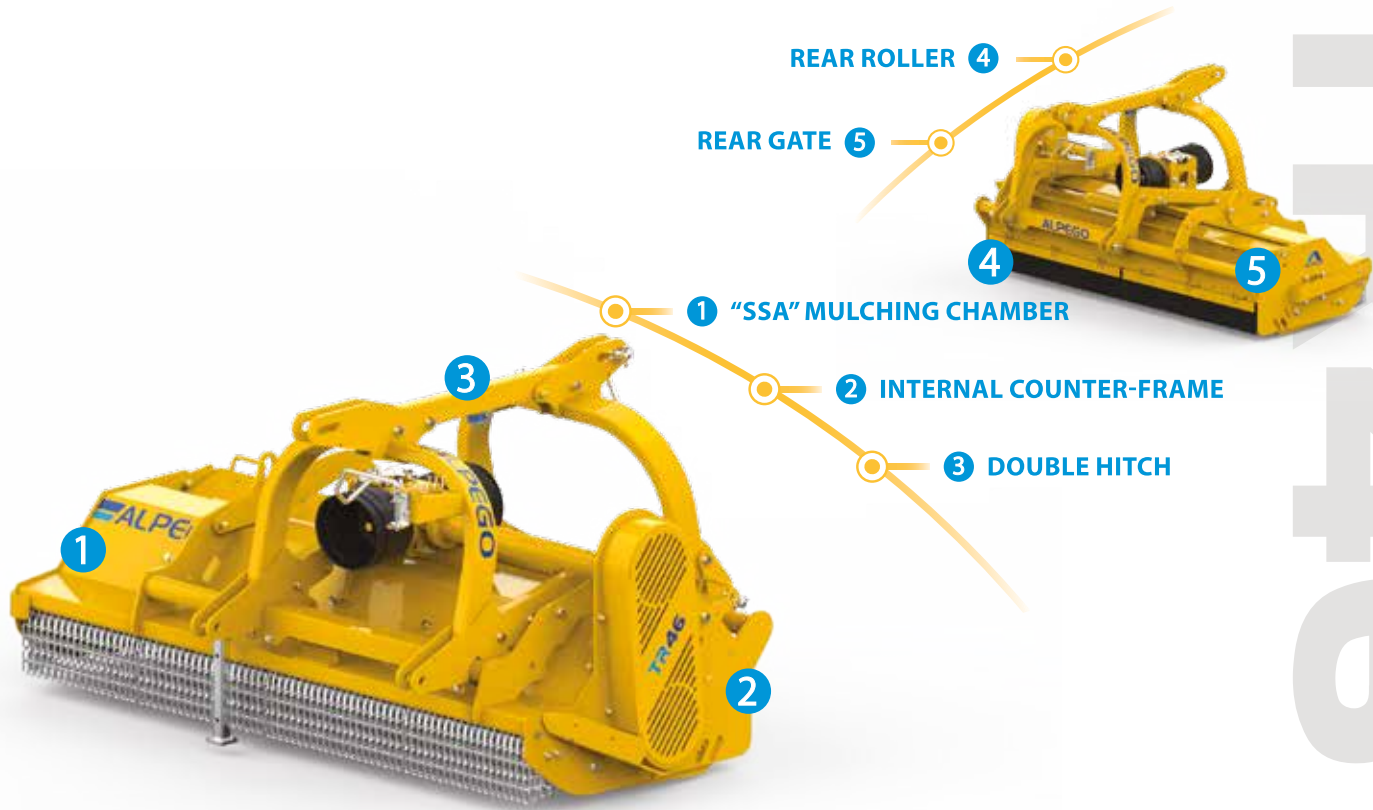
EQUIPMENT

PTO 540 rpm / Cat. 1/2 linkage / Drive shaft with guard / Rear roller Ø160 mm with protected bearings / Fixed counter-blade / Second additional counter-blade

TR46

Professional dual-hitch flail mower
for tractors up to 150 HP,
working width from 2 to 3.1 m
and mulching of residues up to Ø 8/10 cm

Professional flail mower, reinforced for application to the front and rear of tractors with power from 55 to 150 HP. The patented SSA system is used to work, with excellent results and in complete safety, on grass, straw, plant residues, shrubs, corn stalks, brush and wood residues up to Ø 8-10 cm, for maintenance of fallow land and green areas. Available in working widths 2 - 2.2 - 2.4 - 2.8 - 3.1 m.



| | TR46-200 | TR46-220 | TR46-240 | TR46-280CC | TR46-310CC |
|---------------------------------------|----------|----------|----------|------------|------------|
| Working width (mm) | 2000 | 2200 | 2400 | 2800 | 3100 |
| Transport width (mm) | 2150 | 2350 | 2550 | 2950 | 3250 |
| Tractor power (HP) | 55-150 | 60-150 | 65-150 | 70-150 | 70-150 |
| Rods (no.) | 16 | 20 | 20 | 24 | 28 |
| Belts (no.) | 4 | 4 | 4 | 5 | 5 |
| Roller diameter (Ø) | 160 | 160 | 160 | 160 | 160 |
| Weight with hydraulic side shift (Kg) | 890 | 980 | 1030 | 1140 | 1180 |

1 “SSA” MULCHING CHAMBER
Multi-purpose mulching chamber with variable volume; changing the position of the gate, 2 different types of work can be obtained.

2 INTERNAL COUNTER-FRAME
Mulching chamber with double metal frame to increase the strength and integrity of the machine.

3 DOUBLE HITCH
Double 3-point hitch for front and rear machine applications.

4 REAR ROLLER
The self-cleaning rear roller has an automatic roller cleaning system, thanks to its position very close to the rotor.

5 REAR GATE
Opening rear gate for easy maintenance.

EQUIPMENT
PTO 1000 rpm / Cat. 2 linkage / Drive shaft with guard / Rear roller Ø160 mm with protected bearings / Fixed counter-blade / Second additional counter-blade / Hydraulic side shift

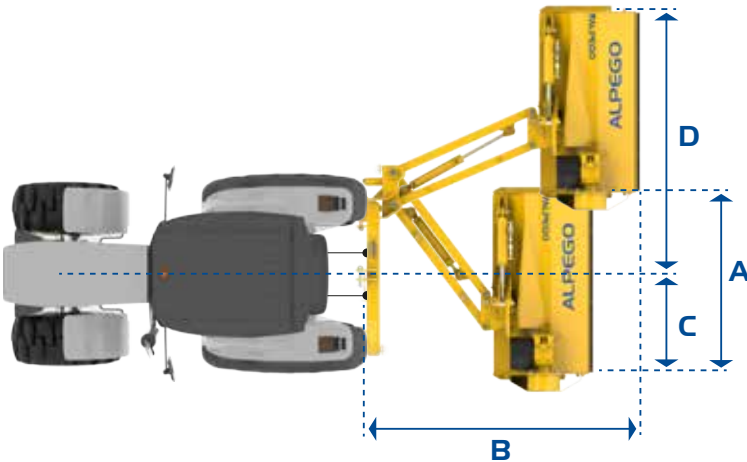
TRILAT

Range of side flail mowers

Multi-purpose 3-sided flail mowers suited for working to the rear or side of the tractor and recommended for grass, plant residues, bushes and prunings with diameters up to 10 cm. Ideal for clearing green areas, gardens, roadsides, ditches, embankments, hedges and sloping land

EXTENDED HYDRAULIC SIDE SHIFT

The side shift has been maximised by the special frame structure, which ensures greater width of movement for the drive shaft.

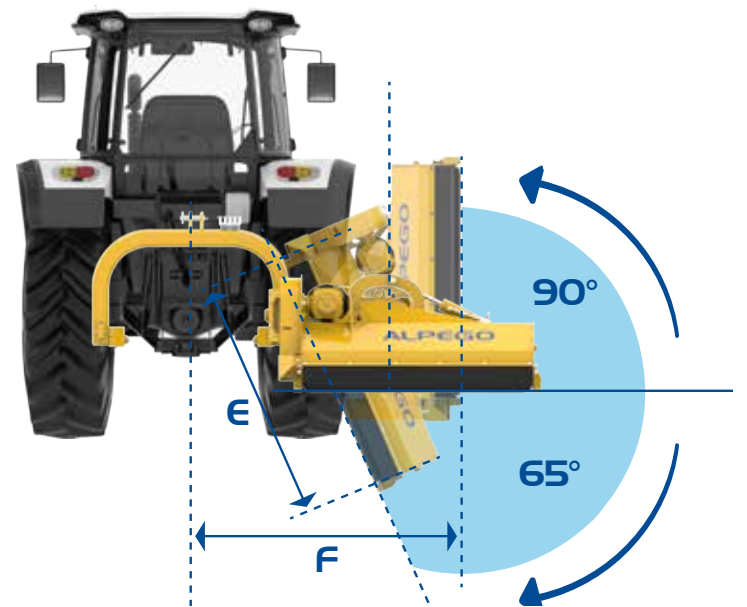


TL31

| | TL31 160 | TL31 180 | TL31 200 | TL31 220 |
|--------|-------------|-------------|-------------|-------------|
| A (mm) | 1600 | 1800 | 2000 | 2200 |
| B (mm) | 1820 | 1860 | 1860 | 1860 |
| C (mm) | 770 | 770 | 770 | 770 |
| D (mm) | 2350 | 2550 | 2750 | 2950 |
| E (mm) | 930 | 1130 | 1330 | 1530 |
| F (mm) | 1700 | 1700 | 1700 | 1700 |

TL33

| | TL33 160 | TL33 180 | TL33 200 | TL33 220 |
|--------|-------------|-------------|-------------|-------------|
| A (mm) | 1600 | 1800 | 2000 | 2200 |
| B (mm) | 1820 | 1860 | 1860 | 1860 |
| C (mm) | 580 | 580 | 580 | 580 |
| D (mm) | 2540 | 2740 | 2940 | 3140 |
| E (mm) | 1100 | 1300 | 1500 | 1700 |
| F (mm) | 1700 | 1700 | 1700 | 1700 |



HYDRAULIC SHOCK ABSORBER

The hydraulic system makes the machine self-levelling and shock-dampened on the tilting axis, making it easier to use with obstacles or particular soil conditions. It also protects the whole machine structure, dampening the shocks produced during work.



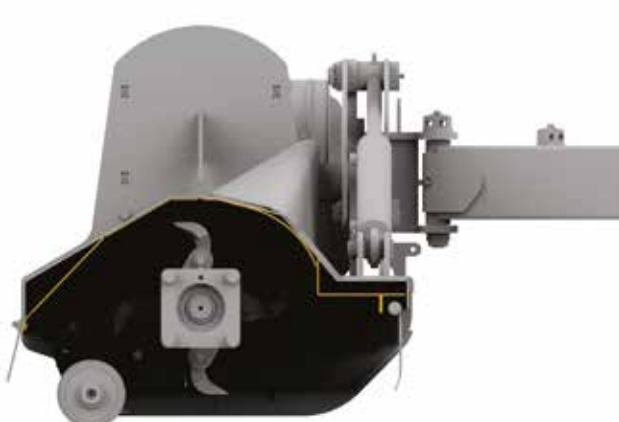
ELASTIC ANTI-COLLISION SECURITY SYSTEM

"NO-STOP" elastic anti-shock safety system, the system is enabled when there are hidden obstacles, blocking the mulching chamber and dampening the shock.



SELF-CLEANING REAR ROLLER

The self-cleaning rear roller has an automatic roller cleaning system, thanks to its position very close to the rotor.



INTERNAL COUNTER-FRAME

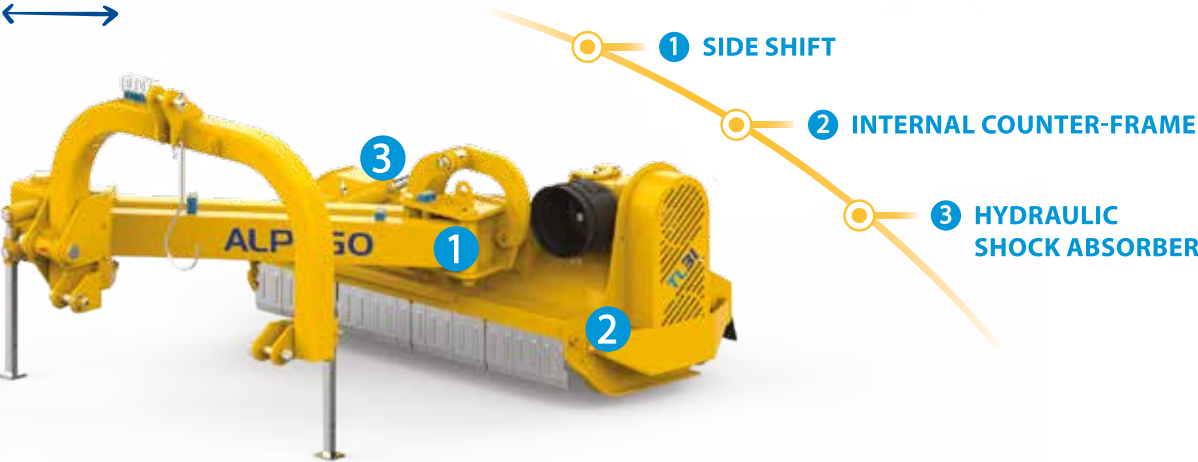
The mulching chamber, consisting of a double metal frame, increases the strength and integrity of the machine, while protecting the rear gate against damage.

TL31

Lateral flail mower
for tractors up to 130 HP,
working width from 1.6 to 2.2 m
and mulching of residues up to Ø 6 cm

Multi-purpose 3-sided flail mower, for tractors from 50 to 130 HP. Suited for working at the rear in rows and to the side of the tractor, recommended for grass, plant residues, shrubs and prunings up to Ø 6 cm. Ideal for clearing roadsides, ditches, embankments, hedges and sloping land generally, available in working widths 1.6- 1.8 – 2 and 2.2 m.

GEARBOX INTERNALLY POSITIONED



| | TL31-160 | TL31-180 | TL31-200 | TL31-220 |
|---------------------------------------|----------|----------|----------|----------|
| Working width (mm) | 1600 | 1800 | 2000 | 2200 |
| Transport width (mm) | 1800 | 2000 | 2200 | 2200 |
| Tractor power (HP) | 55-130 | 65-130 | 75-130 | 75-130 |
| Rods (no.) | 14 | 16 | 16 | 18 |
| Belts (no.) | 4 | 4 | 4 | 4 |
| Roller diameter (Ø) | 140 | 140 | 140 | 140 |
| Weight with hydraulic side shift (Kg) | 670 | 710 | 740 | 815 |

- 1 SIDE SHIFT**
Extended hydraulic side shift.

2 INTERNAL COUNTER-FRAME
Mulching chamber with double metal frame to increase the strength and integrity of the machine.

3 HYDRAULIC SHOCK ABSORBER
System that protects the machine structure, dampening the shocks produced during work.

4 NO-STOP ELASTIC ANTI-SHOCK SYSTEM
Hydraulic safety system enabled when there are hidden obstacles, blocking the mulching chamber and dampening the shock.

5 REAR ROLLER
The self-cleaning rear roller has an automatic roller cleaning system, thanks to its position very close to the rotor.

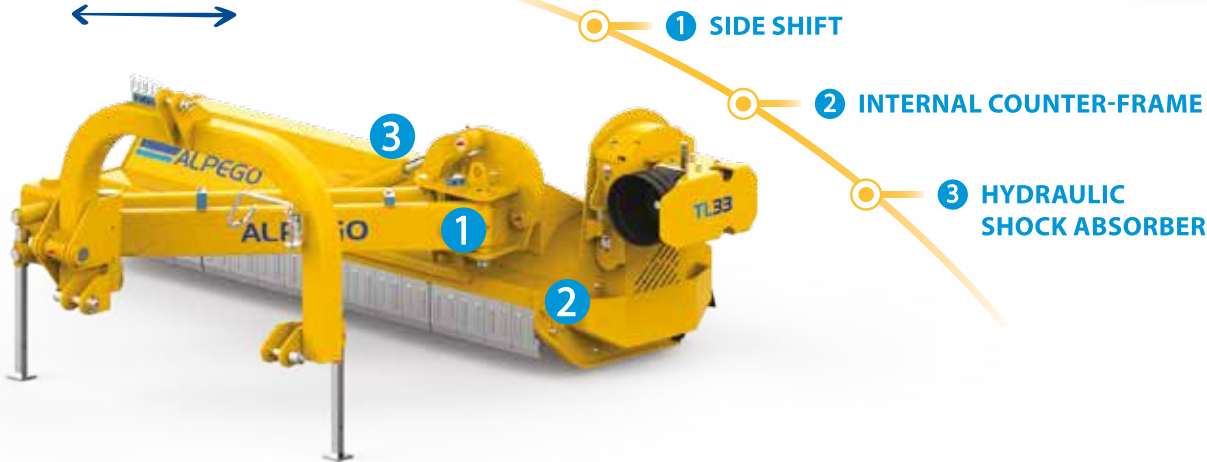
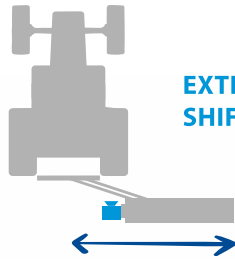
EQUIPMENT
PTO 540 rpm / Cat. 2 fork-shaped linkage / Drive shaft with guard or double homokinetic universal joint (choice of two) / Rear roller Ø140 mm with protected bearings / Fixed counter-blade / Pair of skids

TL33

Lateral flail mower
for tractors up to 130 HP,
working width from 1.6 to 2.2 m
and mulching of residues up to Ø 6 cm

Multi-purpose 3-sided flail mower, for tractors from 50 to 130 HP. Suitable for working at the rear or side of the tractor, with the externally positioned gearbox, for extended side shift. Recommended for grass, plant residues, shrubs and prunings up to Ø 6 cm. Ideal for clearing green areas, gardens, roadsides, embankments, hedges and sloping land generally; available in working widths 1.6- 1.8 - 2 - 2.2 m.

GEARBOX EXTERNALLY POSITIONED



| | TL33-160 | TL33-180 | TL33-200 | TL33-220 |
|---------------------------------------|----------|----------|----------|----------|
| Working width (mm) | 1600 | 1800 | 2000 | 2200 |
| Transport width (mm) | 2100 | 2300 | 2500 | 2700 |
| Tractor power (HP) | 55-130 | 65-130 | 75-130 | 75-130 |
| Rods (no.) | 14 | 16 | 16 | 18 |
| Belts (no.) | 4 | 4 | 4 | 4 |
| Roller diameter (Ø) | 140 | 140 | 140 | 140 |
| Weight with hydraulic side shift (Kg) | 700 | 740 | 780 | 800 |

- 1 SIDE SHIFT**
Extended hydraulic side shift.

2 INTERNAL COUNTER-FRAME
Mulching chamber with double metal frame to increase the strength and integrity of the machine.

3 HYDRAULIC SHOCK ABSORBER
System that protects the machine structure, dampening the shocks produced during work.

4 NO-STOP ELASTIC ANTI-SHOCK SYSTEM
Hydraulic safety system enabled when there are hidden obstacles, blocking the mulching chamber and dampening the shock.

5 REAR ROLLER
The self-cleaning rear roller has an automatic roller cleaning system, thanks to its position very close to the rotor.

EQUIPMENT
PTO 540 rpm / Cat. 2 fork-shaped linkage / Drive shaft with guard or double homokinetic universal joint (choice of two) / Rear roller Ø140 mm with protected bearings / Fixed counter-blade / Pair of skids

TRISTOC

Shredder range

Alpego heavy-duty shredders are ideal for shredding and chopping in open fields: bushes, straw, corn stalks, soy, crop residues, woody and organic materials found on fallow land.

TT97

Shredder
for tractors up to 160 HP,
and working width from 2.8 to 3.2 m

Universal reinforced shredder model TrisToc TT97 for tractors between 80 and 160 HP. This heavy-duty model is ideal for bushes, straw, corn stalks, soy, crop residues, woody and organic materials found on fallow land. Available in working widths 2.8 - 3 - 3.2 m.

DEPTH CONTROL: CHOOSE FROM:



SKIDS

Pair of side skids.



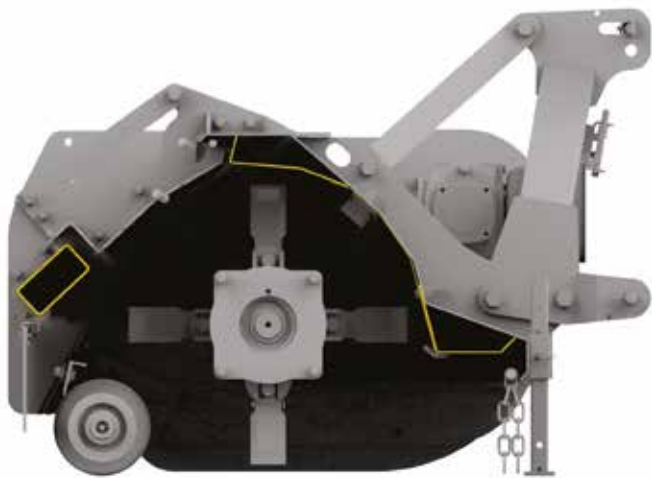
PAIR OF WHEELS

Pair of castors.



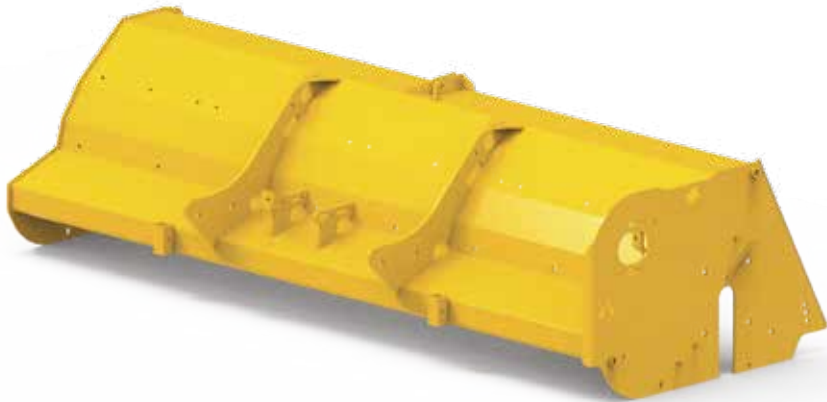
REAR ROLLER

Rear roller mounted on protected bearings



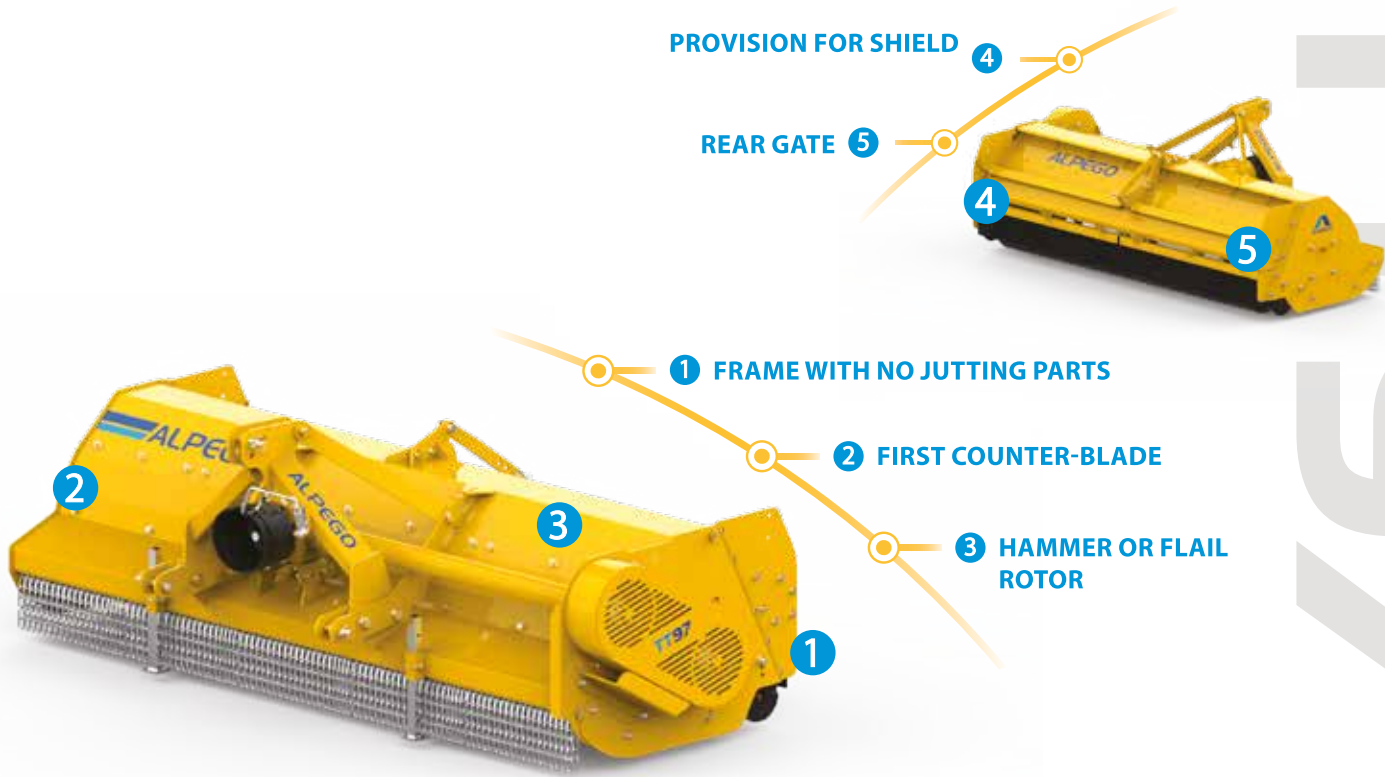
INTERNAL COUNTER-FRAME

The mulching chamber, consisting of a double metal frame, increases the strength and integrity of the machine, while protecting the rear gate against damage.



MONOCOQUE FRAME

Monocoque frame with no visible welds or joints, with no jutting parts. The rotor supports are protected and positioned inside.



| | TT97-280 | TT97-300 | TT97-320 |
|----------------------|----------|----------|----------|
| Working width (mm) | 2800 | 3000 | 3200 |
| Transport width (mm) | 3000 | 3200 | 3400 |
| Tractor power (HP) | 80-160 | 90-160 | 100-160 |
| Rods (no.) | 30 | 32 | 34 |
| Blades (no.) | 60 | 64 | 68 |
| Belts (no.) | 5 | 5 | 5 |
| Roller diameter (Ø) | 220 | 220 | 220 |
| Weight (Kg) | 1165 | 1240 | 1270 |

1 FRAME WITH NO JUTTING PARTS
Monocoque frame with no visible welds or joints, with no jutting parts.

2 FIRST COUNTER-BLADE
First counter-blade built into the frame.

3 HAMMER OR FLAIL ROTOR
Tristoc shredders are available with rotor equipped with flails or hammers (CHOOSE WHICH).

4 PROVISION FOR SHIELD
Provision for internal anti-wear shield (available in the accessories).

5 REAR GATE
Opening rear gate for easy maintenance.

EQUIPMENT
PTO 1000 rpm / Cat. 2 linkage / Drive shaft with guard / Side plates / Depth control (choose which)

Choosing the accessory

The right accessory for every situation



PAIR OF STEERING WHEELS



REAR RAKE KIT



FRONT PROTECTION CHAIN KIT



HOMOKINETIC UNIVERSAL JOINT



COUNTER-BLADE KIT



ANTI-WEAR SHIELD FOR FRAME

| Accessories | TB2 | TR26 | TR36 | TR46 | TL50 | TL31 | TL33 | TT97 |
|-----------------------------|-----|------|------|------|------|------|------|------|
| Pair of steering wheels | — | | | — | — | — | — | — |
| Rear rake kit | — | — | | — | — | — | — | — |
| Front protection chain kit | — | — | | | — | — | — | |
| Homokinetic universal joint | — | — | — | — | | | | — |
| Counter-blade kit | — | — | — | — | — | — | — | |
| Anti-wear shield for frame | — | — | — | — | — | — | — | |

Accessory Standard — Not available

Multi-purpose flail mower
TrisaR TR36



FIXED POWER HARROWS

40 - 320 HP



FOLDING POWER HARROWS

320 - 500 HP



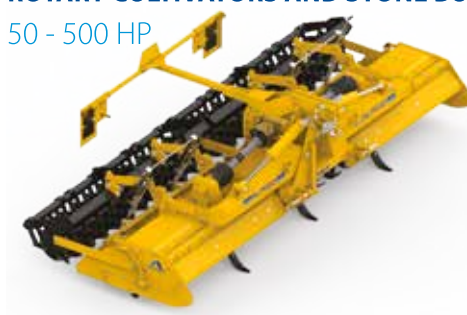
SUBSOILERS

50 - 500 HP



ROTARY CULTIVATORS AND STONE BURIERS

50 - 500 HP



SEED DRILLS

75 - 320 HP



FRONT HOPPERS

90 - 500 HP



CULTIVATORS

110 - 270 HP



FLAIL MOWERS

40 - 160 HP



ALPEGO